



THE MILL

THE MILL



THE MILL

Atlanta's newest office redevelopment, The Mill, has a rich history. Originally built in the late 1890's The Mill has been known as the DuPre Excelsior Mill and The Masquerade, a concert venue hosting a variety of well-known local and national acts. The building is situated in the heart of O4W and has direct connectivity to the beltline.



Ideal for single
30,000 SF tenant



3.6/1,000
On-Site Parking



Direct access to
the Beltline



Historic character
with modern updates





WHOLE
FOODS
MARKET

SKYLINE
PARK

CITY WINERY

THE FORUM
ATHLETIC CLUB



PONCE CITY MARKET

NINE
MILE
STATION



CITIZEN
SUPPLY

HOLEMAN
AND FINCH
PUBLIC
HOUSE

PONCE DE LEON AVE NE

EASTSIDE BELTLINE TRAIL

NORTH AVE



THE MILL

OLD FOURTH
WARD
PARK

VENKMAN'S



BAZATI

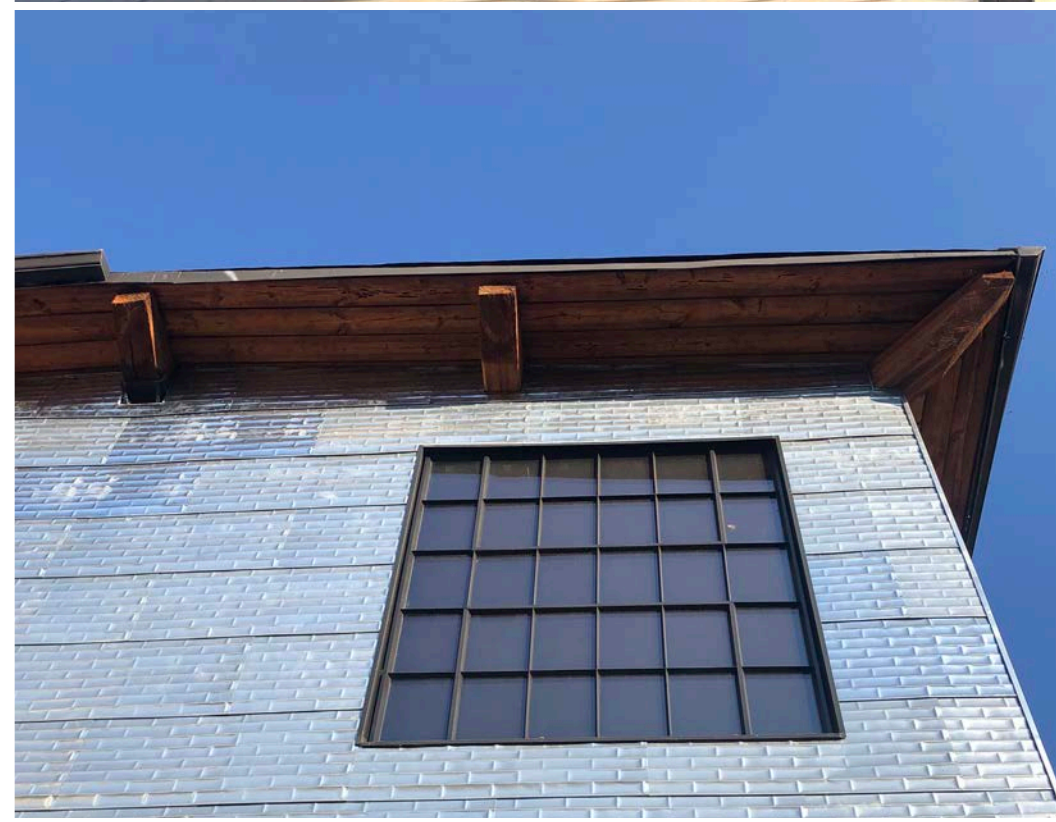
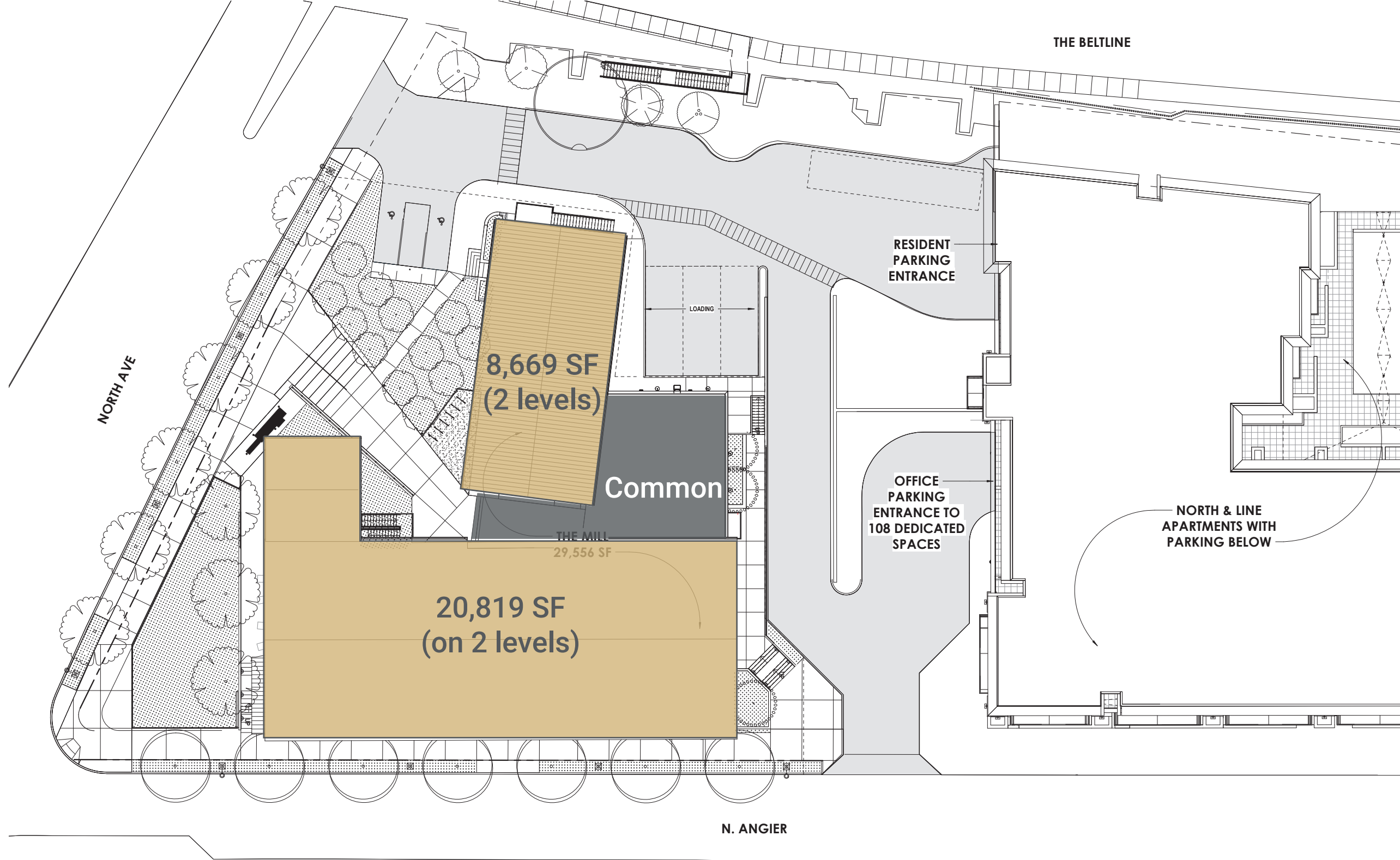
NEW REALM
BREWING COMPANY

BULLY BOY

two
URBAN LICKS

SEITZENA

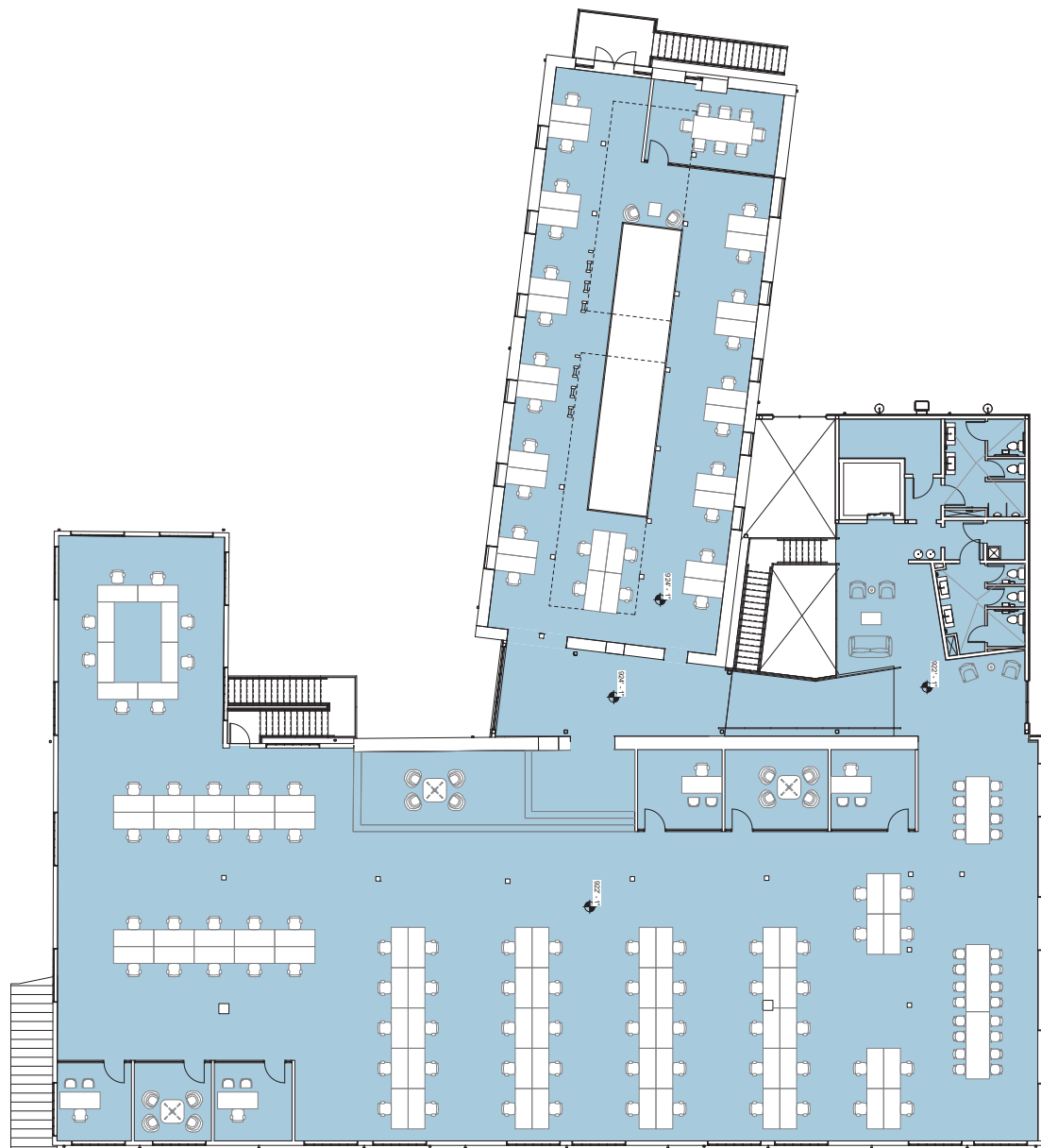
SITE PLAN



STREET LEVEL



UPPER LEVEL





T H E M I L L
WWW.THEMILLATL.COM

For Leasing information:

Heather Lamb
+1 404 574 1913
heather.lamb@colliers.com

Jessica Doyle
+1 404 877 9262
jessica.doyle@colliers.com

Colliers
INTERNATIONAL

Copyright © 2020 Colliers International. Information herein has been obtained from sources deemed reliable, however its accuracy cannot be guaranteed. The user is required to conduct their own due diligence and verification.

